

HMSU NORTH ENTRY SITE RENOVATION



PROJECT LOCATION MAP

DRAWING INDEX

CIVIL

ELECTRICAL
E101 ELECTRICAL / LIGHTING PLAN

DEMOLITION

D001 DEMOLITION PLAN BASE BID #1
D100 DEMOLITION PLAN BASE BID #2
D101 DEMOLITION PLAN BASE BID #3

MECHANICAL

ARCHITECTURAL

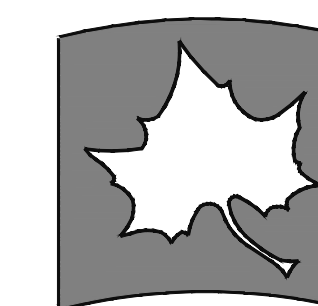
A001 SITE PLAN BASE BID #1
A100 SITE PLAN BASE BID #2
A101 SITE PLAN BASE BID #3
A102 ENLARGED SITE PLAN BASE BID #3
A200 ELEVATION SECTIONS BASE BID #3
A201 ELEVATION SECTIONS BASE BID #3
A202 ELEVATION SECTIONS BASE BID #3
A301 DETAILS

PLUMBING

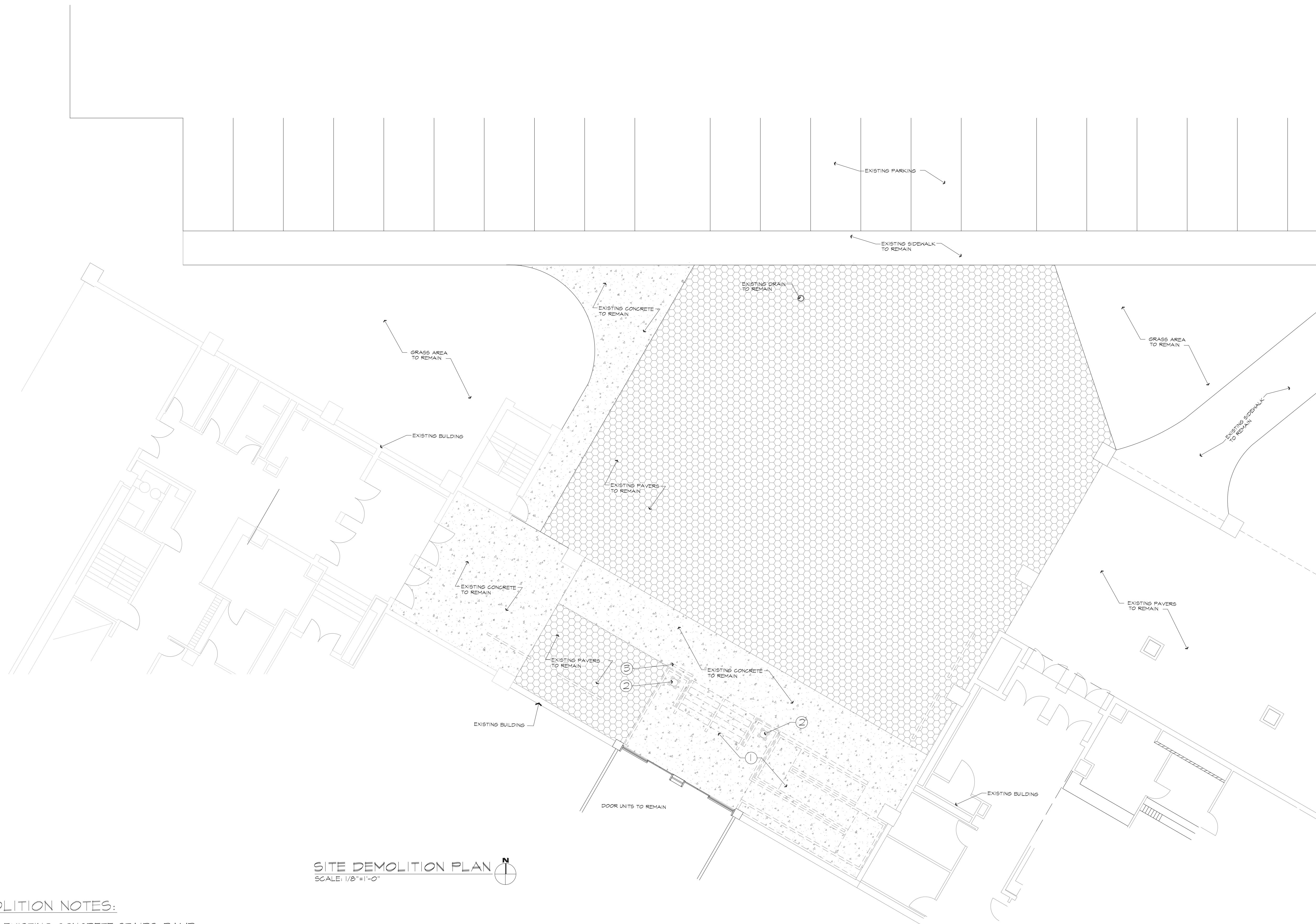
FIRE PROTECTION

DATE: 3/12/2024 PROJ. NO.: B0028128

INDIANA STATE UNIVERSITY



Facilities Management
951 Sycamore Street
Terre Haute, IN 47809
phone: (812) 237-8100 fax: (812) 237-7630

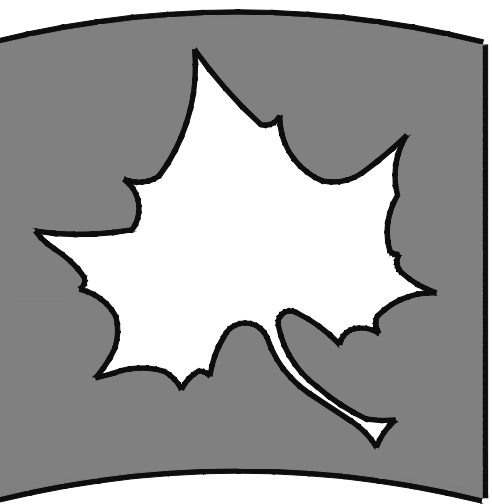


SITE DEMOLITION PLAN
SCALE: 1/8"=1'-0"

DEMOLITION NOTES:

- ① REMOVE EXISTING CONCRETE STAIRS; RAMP; AND RAILING COMPLETE.
- ② REMOVE EXISTING LIGHT POLE FIXTURE COMPLETE. SAVE FOR REINSTALLATION.
- ③ REMOVE EXISTING CAMPUS MAP DIRECTORY COMPLETE. SAVE FOR RE-INSTALLATION IN PROJECT.

BASE BID #1



INDIANA STATE UNIVERSITY

Facilities Management Department
951 Sycamore Street
Terre Haute, Indiana 47804
Phone: (812) 237-8100 Fax: (812) 237-1630

HNSU NORTH ENTRY
PLAZA RENOVATION

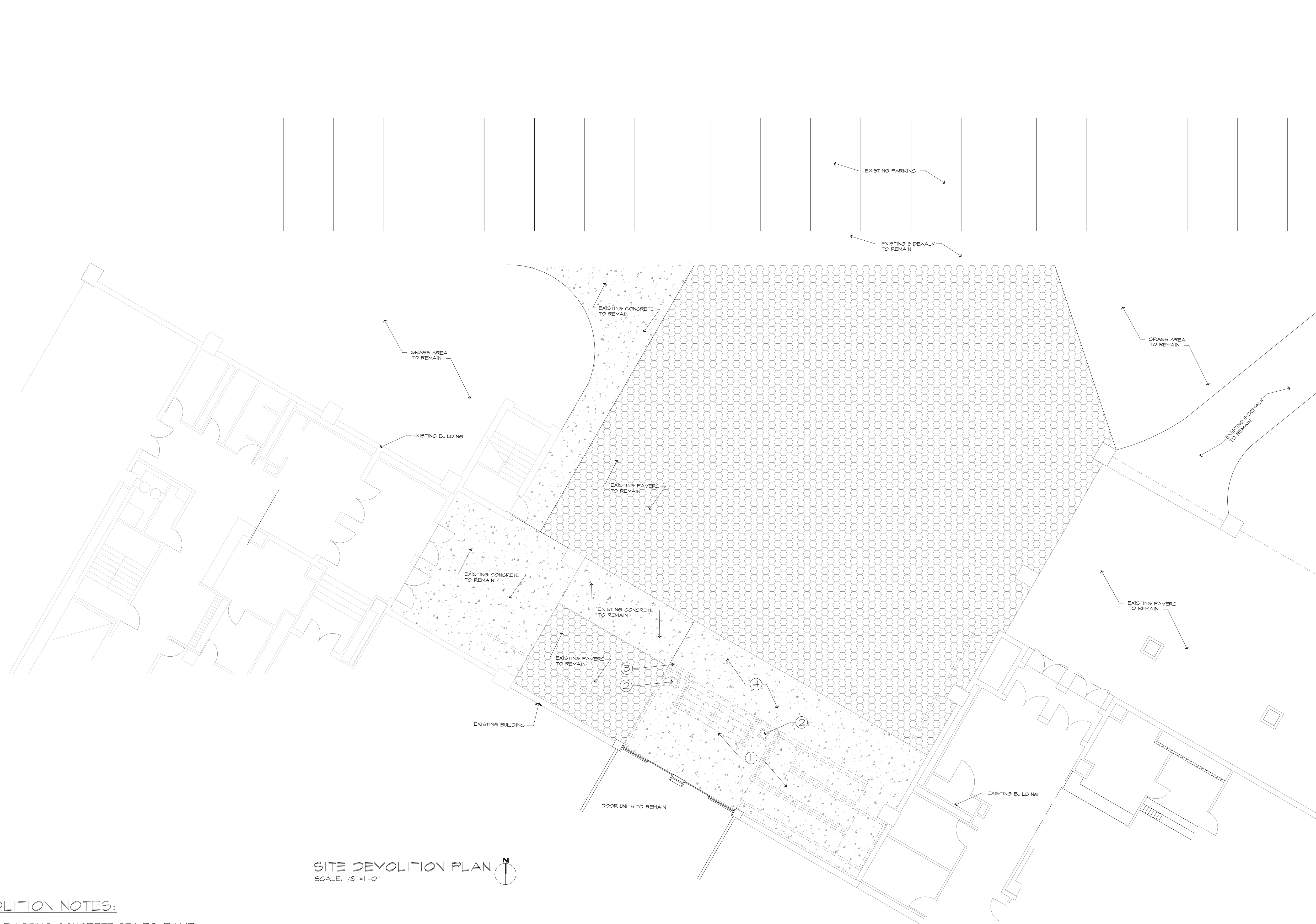
BASE BID #1 SITE DEMOLITION PLAN

FILENAME:	
PROPERTY NO.:	
REVISIONS	
1	
2	
DATE:	3/12/2024
SCALE:	1/8"=1'-0"
DRAWN BY:	S. STILLMAN
CHECKED BY:	B. DUNCAN
APPROVED BY:	
PROJECT NO.:	

SHEET NO.:

001

OF SHEETS

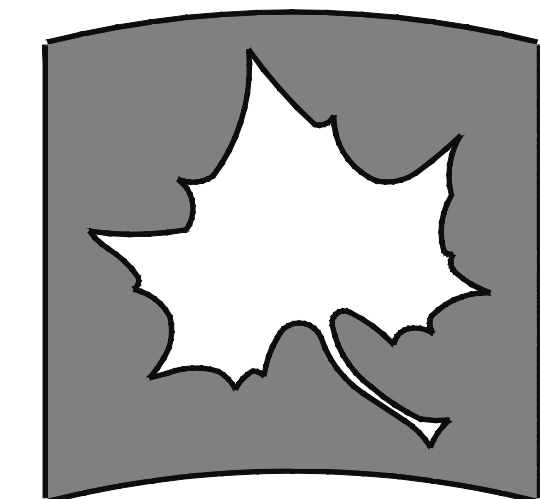


SITE DEMOLITION PLAN
SCALE: 1/8"=1'-0"

DEMOLITION NOTES:

- ① REMOVE EXISTING CONCRETE STAIRS; RAMP; AND RAILING COMPLETE.
- ② REMOVE EXISTING LIGHT POLE FIXTURE COMPLETE. TURN OVER TO OWNER. MOVE TO LOCATION STORAGE FACILITY ON CAMPUS.
- ③ REMOVE EXISTING CAMPUS MAP DIRECTORY COMPLETE. SAVE FOR RE-INSTALLATION IN PROJECT.
- ④ REMOVE EXISTING CONCRETE SIDEWALK COMPLETE.

BASE BID #2



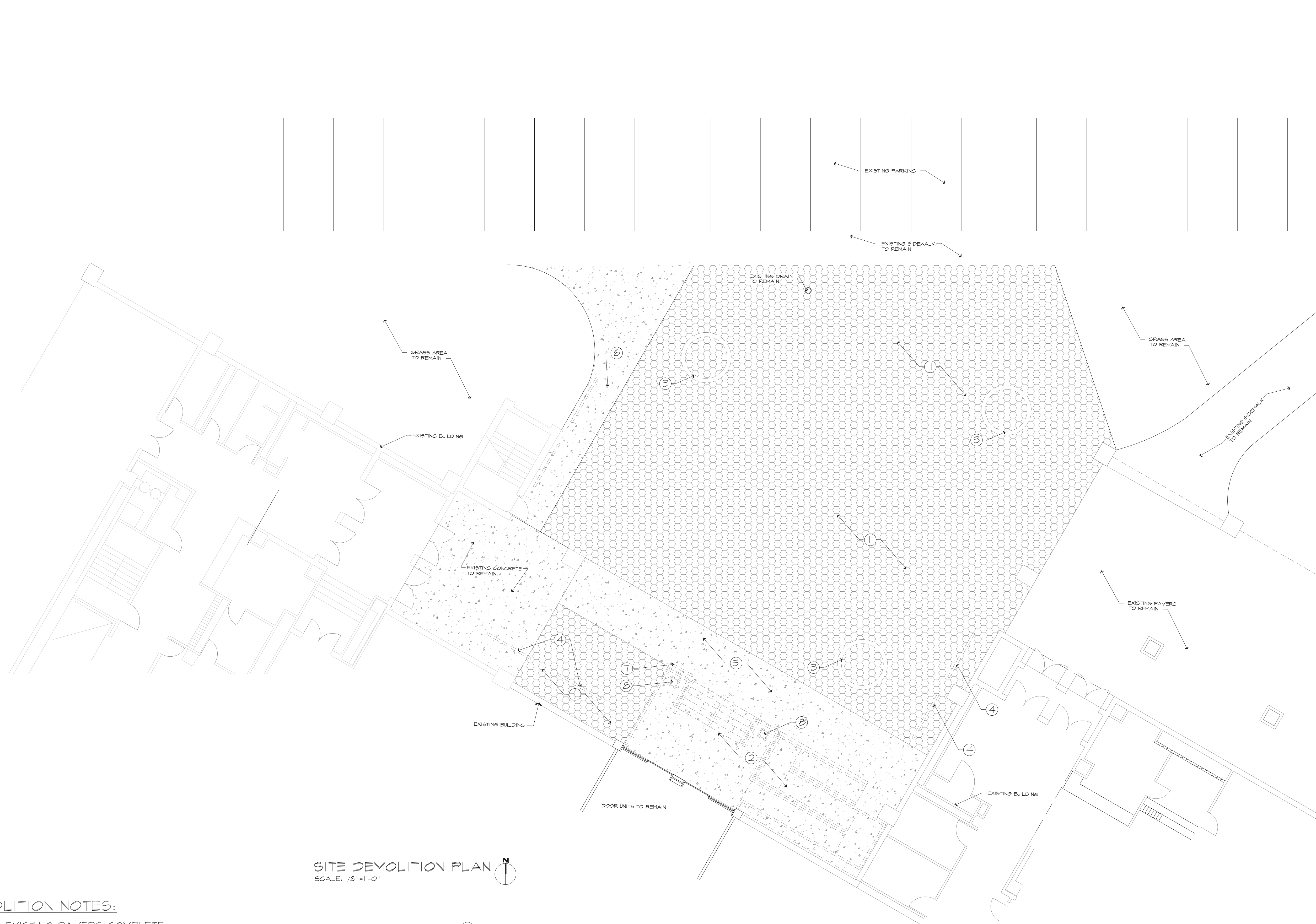
INDIANA STATE UNIVERSITY
Facilities Management Department
951 Sycamore Street
Terre Haute, Indiana 47804
Phone: (812) 237-8100 Fax: (812) 237-1630

HMSU NORTH ENTRY
PLAZA RENOVATION
BASE BID #2 SITE DEMOLITION PLAN

REVISIONS	
1	
2	

DATE: 3/7/22024
SCALE: 1/8"=1'-0"
DRAWN BY: S. TILLMAN
CHECKED BY: B. DUNCAN
APPROVED BY:
PROJECT NO.:

SHEET NO.
D100
OF SHEETS

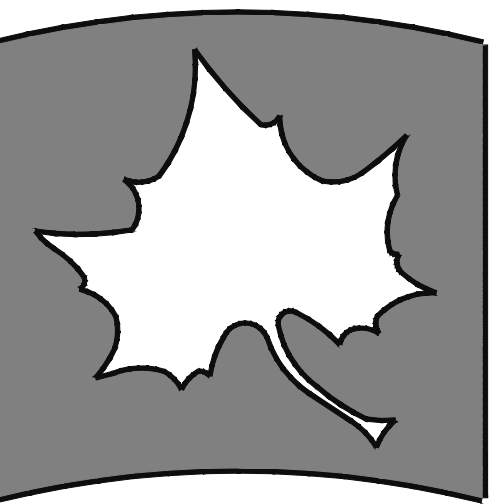


SITE DEMOLITION PLAN
SCALE: 1/8"=1'-0"

DEMOLITION NOTES:

- ① REMOVE EXISTING PAVERS COMPLETE. STACK ON PALATES AND TURN OVER TO OWNER. MOVE TO LOCATION STORAGE FACILITY ON CAMPUS.
- ② REMOVE EXISTING CONCRETE STAIRS AND RAMP COMPLETE.
- ③ EXISTING CONCRETE PLANTERS TO BE RELOCATED TO STORAGE FACILITY ON CAMPUS.
- ④ REMOVE EXISTING BIKE RACKS COMPLETE AND TURN OVER TO OWNER.
- ⑤ REMOVE EXISTING CONCRETE SIDEWALK COMPLETE.
- ⑥ REMOVE EXISTING CONCRETE SIDEWALK COMPLETE.
- ⑦ REMOVE EXISTING CAMPUS MAP DIRECTORY COMPLETE. SAVE FOR RE-INSTALLATION IN PROJECT.
- ⑧ REMOVE EXISTING LIGHT POLE FIXTURE COMPLETE. TURN OVER TO OWNER. MOVE TO LOCATION STORAGE FACILITY ON CAMPUS.

BASE BID #3



INDIANA STATE UNIVERSITY

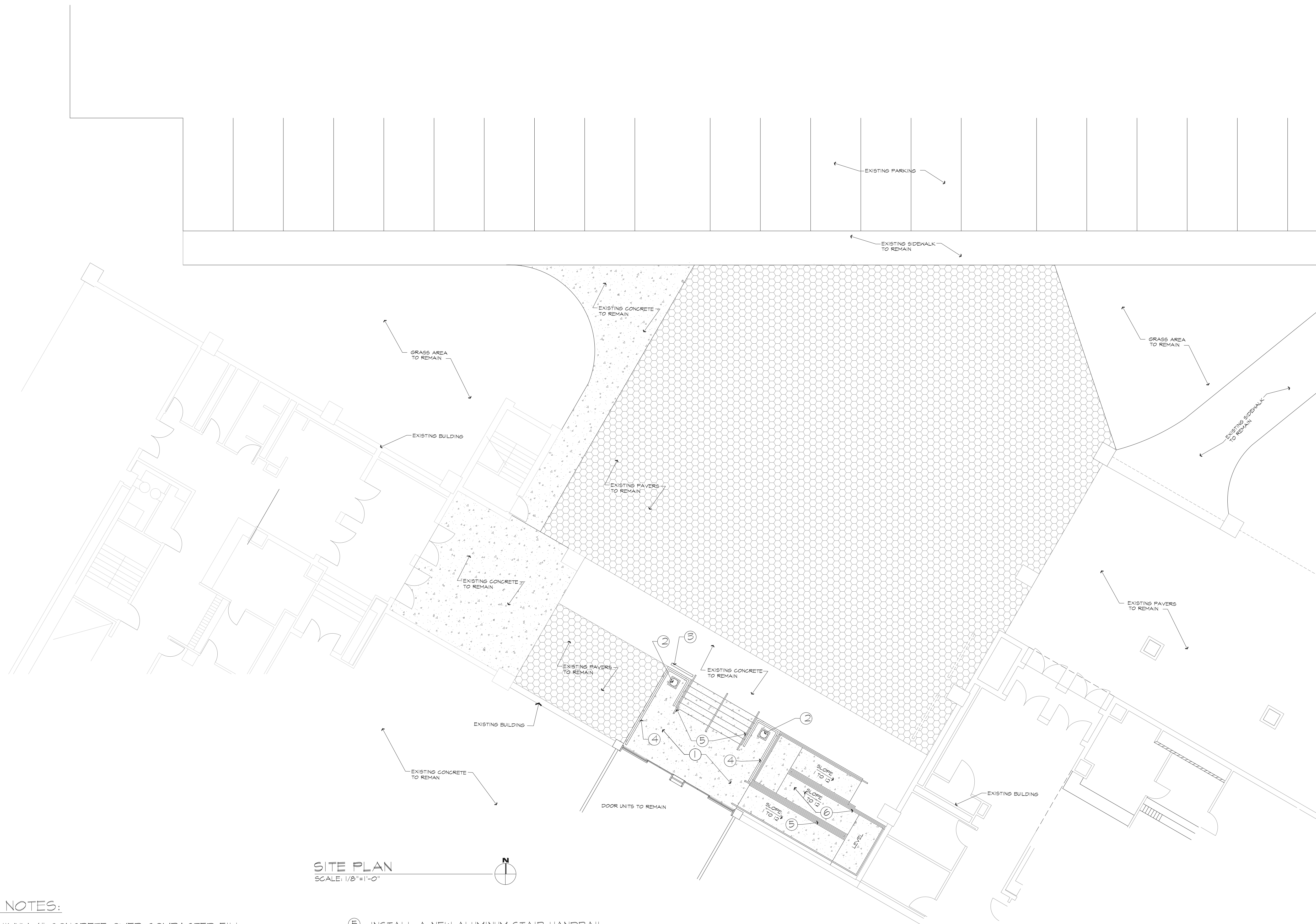
Facilities Management Department
951 Sycamore Street
Terre Haute, Indiana 47804
Phone: (812) 237-8100 Fax: (812) 237-1630

HMSU NORTH ENTRY
PLAZA RENOVATION

BASE BID #3 SITE DEMOLITION PLAN

FILENAME:	
PROPERTY NO.:	
REVISIONS	
1	
2	
DATE:	3/12/2024
SCALE:	1/8"=1'-0"
DRAWN BY:	S. STILLMAN
CHECKED BY:	B. DUNCAN
APPROVED BY:	
PROJECT NO.:	

SHEET NO.
D101
OF SHEETS

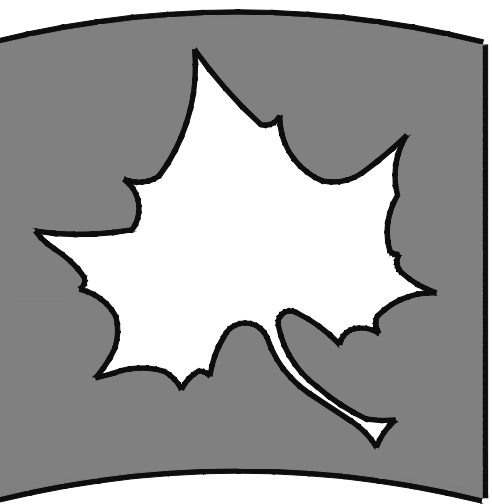


SITE PLAN
SCALE: 1/8"=1'-0"

PLAN NOTES:

- ① POUR MINIMUM 4" CONCRETE OVER COMPACTED FILL.
- ② REMOVE EXISTING LIGHT POLE FIXTURE COMPLETE. TURN OVER TO OWNER. SAVE FOR RE-INSTALLATION IN PROJECT.
- ③ REMOVE EXISTING CAMPUS MAP DIRECTORY COMPLETE. SAVE FOR RE-INSTALLATION IN PROJECT.
- ④ INSTALL A NEW ALUMINUM RAILING CABLE RAIL GUARDRAIL. SEE DETAIL SHEET ?
- ⑤ INSTALL A NEW ALUMINUM STAIR HANDRAIL. SEE ELEVATIONS AND DETAIL SHEET ?
- ⑥ CONSTRUCT A NEW POURED CONCRETE RAMP WITH A 4" TALL CONCRETE CURBING.

BASE BID #1



INDIANA STATE UNIVERSITY

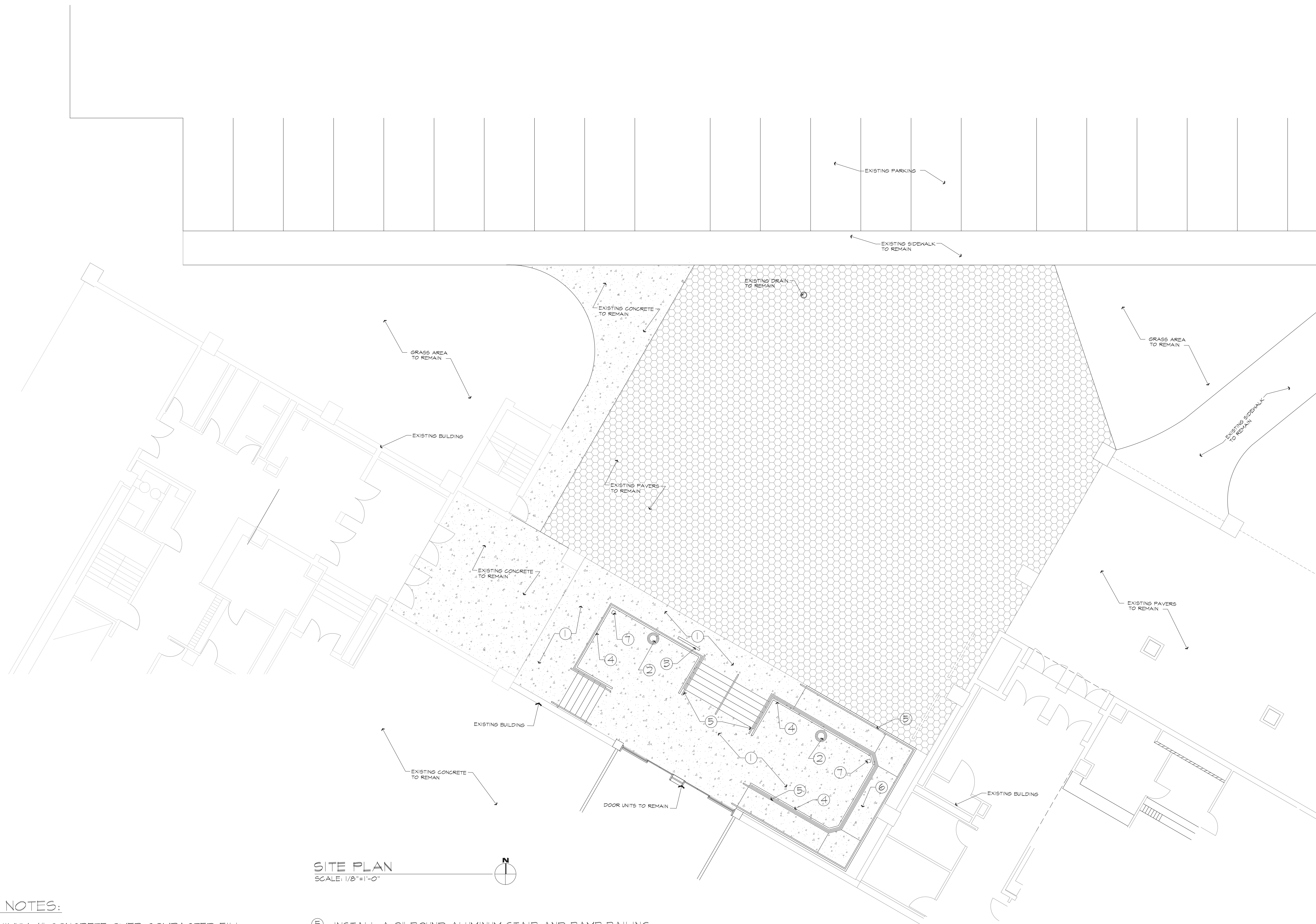
Facilities Management Department
951 Sycamore Street
Terre Haute, Indiana 47804
Phone: (812) 237-8100 Fax: (812) 237-1630

HMSU NORTH ENTRY
PLAZA RENOVATION

Base bid #1 Stair and Ramp

FILENAME:	
PROPERTY NO.:	
REVISIONS	
1	
2	
DATE:	3/12/2024
SCALE:	1/4"=1'-0"
DRAWN BY:	S. STILLMAN
CHECKED BY:	B. DUNCAN
APPROVED BY:	
PROJECT NO.:	

SHEET NO. **A001**
OF SHEETS

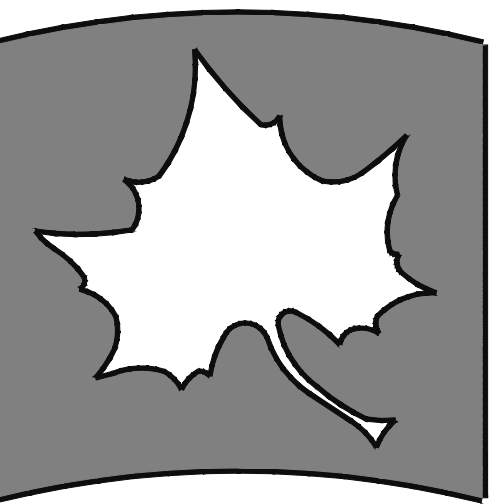


SITE PLAN
SCALE: 1/8"=1'-0"

PLAN NOTES:

- ① POUR MINIMUM 4" CONCRETE OVER COMPACTED FILL
- ② INSTALL NEW LIGHT POLE FIXTURE. SEE SPECIFICATIONS FOR DETAILS.
- ③ RE-INSTALL SALVAGED CAMPUS MAP DIRECTOR.
- ④ INSTALL AN ALUMINUM RAILING AND CABLE RAIL GUARDRAIL. SEE ELEVATIONS AND DETAILS.
- ⑤ INSTALL A 2" ROUND ALUMINUM STAIR AND RAMP RAILING. SEE ELEVATIONS AND DETAILS.
- ⑥ CONSTRUCT A POURED CONCRETE RAMP AND RETAINING WALL WITH A 4" TALL CURB. SEE ELEVATIONS AND DETAILS.
- ⑦ INSTALL AN EXTERIOR SURFACE MOUNTED DUPLEX OUTLET BOX. SEE SPECIFICATIONS FOR DETAILS.

BASE BID #2



INDIANA STATE UNIVERSITY

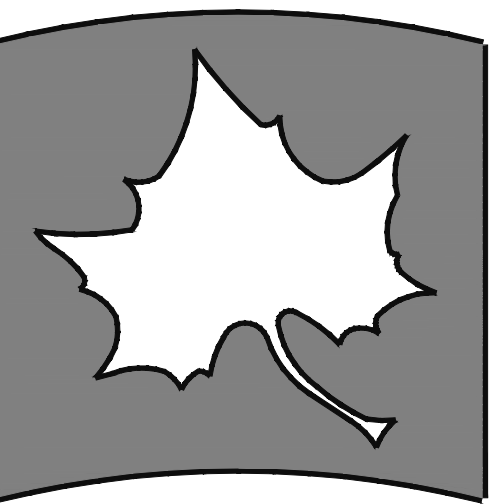
Facilities Management Department
951 Sycamore Street
Terre Haute, Indiana 47804
Phone: (812) 237-8100 Fax: (812) 237-1630

HMSU NORTH ENTRY
PLAZA RENOVATION

Base bid #2 Stair and Ramp

FILENAME:	
PROPERTY NO.:	
REVISIONS	
1	
2	
DATE:	3/12/2024
SCALE:	1/4"=1'-0"
DRAWN BY:	S. STILLMAN
CHECKED BY:	B. DUNCAN
APPROVED BY:	
PROJECT NO.:	

SHEET NO. 1100
OF SHEETS

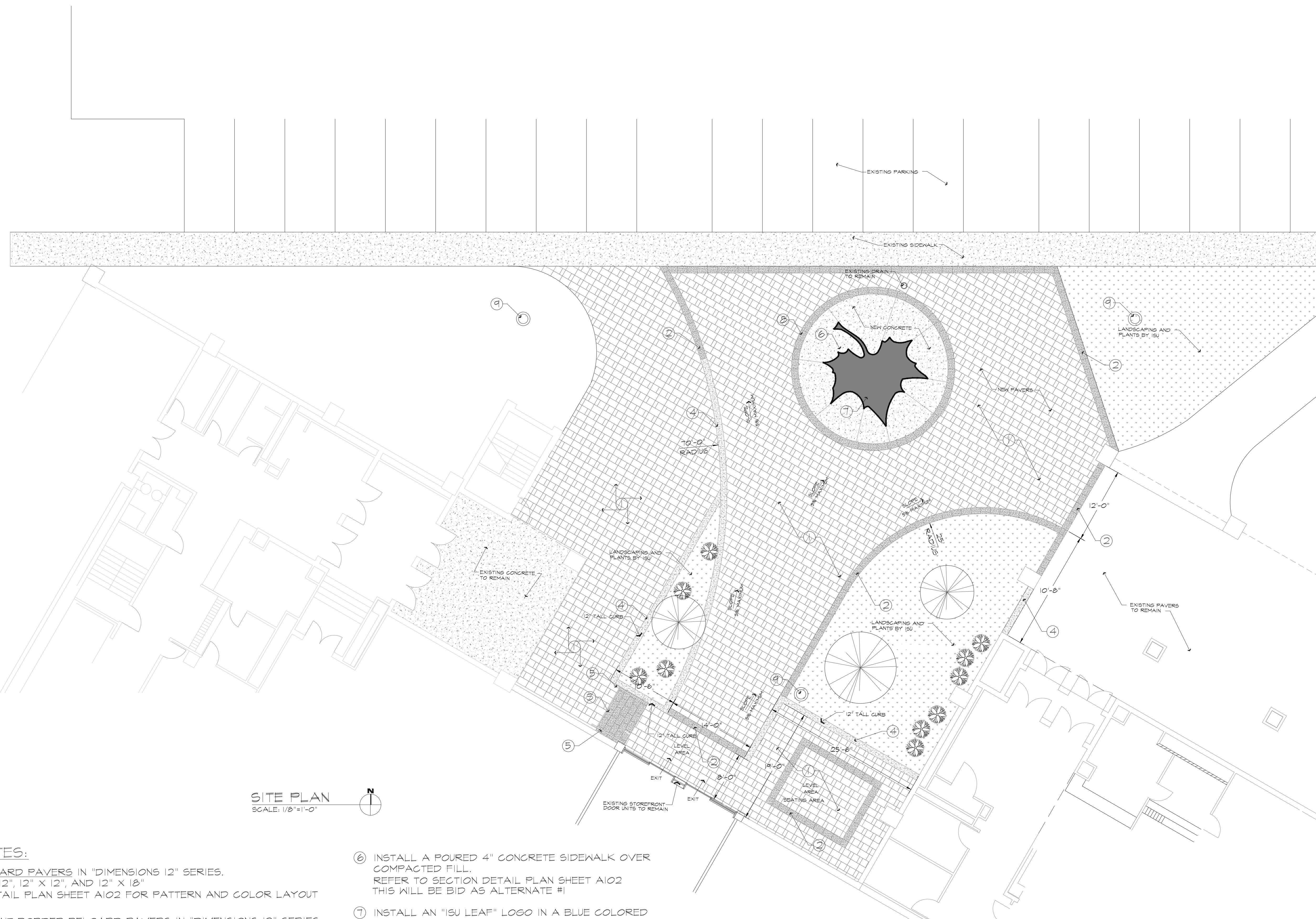


INDIANA STATE UNIVERSITY

Facilities Management Department
951 Sycamore Street
Terre Haute, Indiana 47804
Phone: (812) 237-8100 Fax: (812) 237-1630

HMSU NORTH ENTRY
PLAZA RENOVATION

SITE PLAN



SITE PLAN
SCALE: 1/8"=1'-0"

PLAN NOTES:

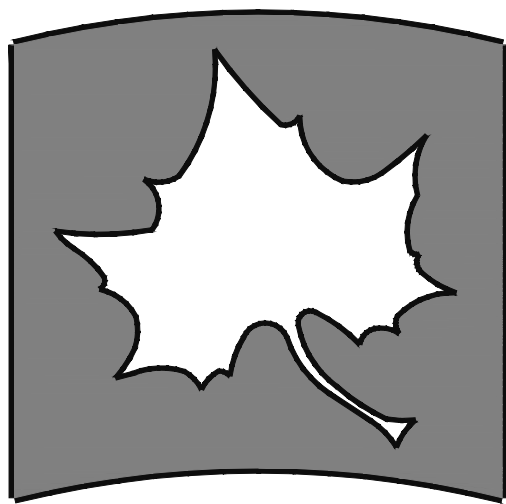
- ① INSTALL BELGARD PAVERS IN "DIMENSIONS 12" SERIES. IN SIZES 6" X 12", 12" X 12", AND 12" X 18" REFER TO DETAIL PLAN SHEET A102 FOR PATTERN AND COLOR LAYOUT
- ② INSTALL ACCENT BORDER BELGARD PAVERS IN "DIMENSIONS 12" SERIES SIZE TO BE 12" X 18" IN COLOR "MIDNIGHT".
- ③ INSTALL STEPS AS BELGARD PAVERS IN "DIMENSIONS 12" SERIES SIZE TO BE 12" X 18" IN COLOR "MIDNIGHT". REFER TO SECTION DETAIL PLAN SHEET A102
- ④ INSTALL A Poured 12" WIDE CONCRETE RETAINING WALL ON A 12" X 24" CONCRETE CONTINUOUS FOOTING. REFER TO SECTION DETAIL PLAN SHEET A102
- ⑤ INSTALL 2" ROUND METAL HANDRAILS. SLEEVE AND ANCHOR INTO NEW STEPS. REFER TO SECTION DETAIL PLAN SHEET A102

- ⑥ INSTALL A Poured 4" CONCRETE SIDEWALK OVER COMPACTED FILL. REFER TO SECTION DETAIL PLAN SHEET A102 THIS WILL BE BID AS ALTERNATE #1
- ⑦ INSTALL AN "ISU LEAF" LOGO IN A BLUE COLORED Poured 4" CONCRETE. REFER TO SECTION DETAIL PLAN SHEET A102 THIS WILL BE BID AS ALTERNATE #1
- ⑧ INSTALL ACCENT BORDER BELGARD PAVERS IN "DIMENSIONS 12" SERIES SIZE TO BE 12" X 18" IN COLOR "MIDNIGHT". THIS WILL BE BID AS ALTERNATE #1
- ⑨ INSTALL A Poured CONCRETE BASE FOR A LIGHT POLE FIXTURE. INSTALL A POWER CONDUIT AND ANCHOR PAD BOLTS AS REQUIRED. SEE SPECIFICATIONS FOR DETAILS.

BASE BID #3

FILENAME:	
PROPERTY NO.:	
REVISIONS	
1	
2	
DATE:	3/12/2024
SCALE:	1/8"=1'-0"
DRAWN BY:	S. STILLMAN
CHECKED BY:	B. DUNCAN
APPROVED BY:	
PROJECT NO.:	

SHEET NO. A101
OF SHEETS



INDIANA STATE UNIVERSITY
 Facilities Management Department
 951 Sycamore Street
 Terre Haute, Indiana 47804
 Phone: (812) 237-8100 Fax: (812) 237-1630

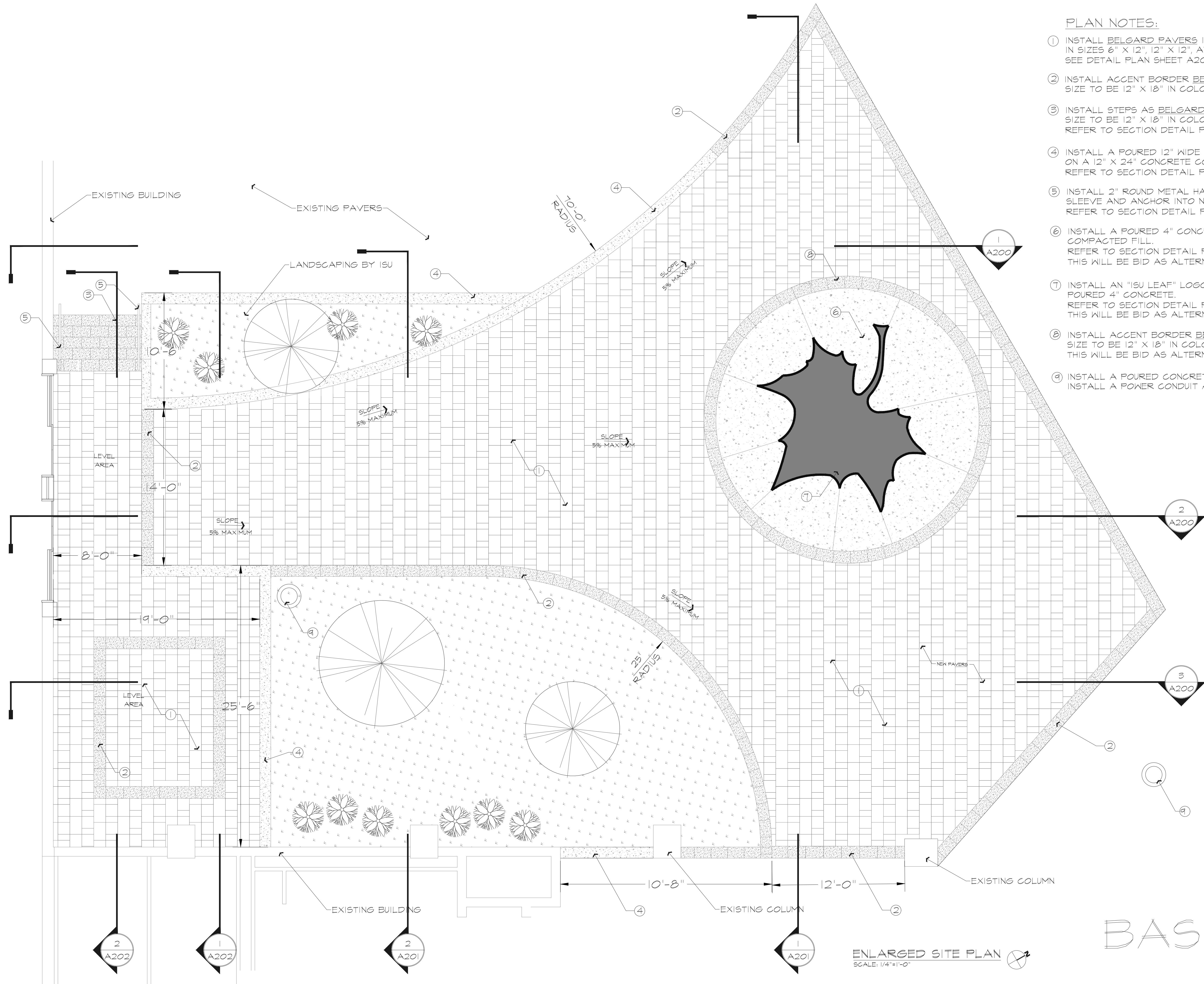
HMSU NORTH ENTRY
 PLAZA RENOVATION
 ENLARGED SITE PLAN

FILENAME	PROPERTY NO.	REVISIONS
DATE:	3/12/2024	
SCALE:	1/4"=1'-0"	
DRAWN BY:	S. STILLMAN	
CHECKED BY:	B. DUNCAN	
APPROVED BY:		
PROJECT NO.:		

SHEET NO.
A102
 OF SHEETS

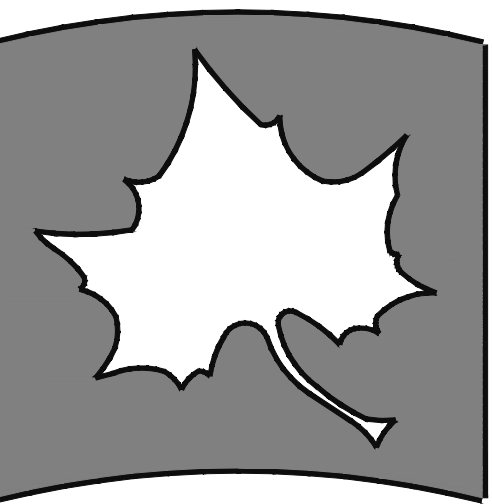
PLAN NOTES:

- ① INSTALL BELGARD PAVERS IN "DIMENSIONS 12" SERIES, IN SIZES 6" X 12", 12" X 12", AND 12" X 18" SEE DETAIL PLAN SHEET A201 FOR PATTERN AND COLOR LAYOUT
- ② INSTALL ACCENT BORDER BELGARD PAVERS IN "DIMENSIONS 12" SERIES SIZE TO BE 12" X 18" IN COLOR "MIDNIGHT".
- ③ INSTALL STEPS AS BELGARD PAVERS IN "DIMENSIONS 12" SERIES SIZE TO BE 12" X 18" IN COLOR "MIDNIGHT". REFER TO SECTION DETAIL PLAN SHEET A201
- ④ INSTALL A POURED 12" WIDE CONCRETE RETAINING WALL ON A 12" X 24" CONCRETE CONTINUOUS FOOTING. REFER TO SECTION DETAIL PLAN SHEET A201
- ⑤ INSTALL 2" ROUND METAL HANDRAILS, SLEEVE AND ANCHOR INTO NEW STEPS. REFER TO SECTION DETAIL PLAN SHEET A201
- ⑥ INSTALL A POURED 4" CONCRETE SIDEWALK OVER COMPACTED FILL. REFER TO SECTION DETAIL PLAN SHEET A201 THIS WILL BE BID AS ALTERNATE #1
- ⑦ INSTALL AN "ISU LEAF" LOGO IN A BLUE COLORED POURED 4" CONCRETE. REFER TO SECTION DETAIL PLAN SHEET A201 THIS WILL BE BID AS ALTERNATE #1
- ⑧ INSTALL ACCENT BORDER BELGARD PAVERS IN "DIMENSIONS 12" SERIES SIZE TO BE 12" X 18" IN COLOR "MIDNIGHT". THIS WILL BE BID AS ALTERNATE #1
- ⑨ INSTALL A POURED CONCRETE BASE FOR A LIGHT POLE FIXTURE. INSTALL A POWER CONDUIT AND ANCHOR PAD BOLTS AS REQUIRED.



BASE BID #3

ENLARGED SITE PLAN
 SCALE: 1/4"=1'-0"



INDIANA STATE UNIVERSITY

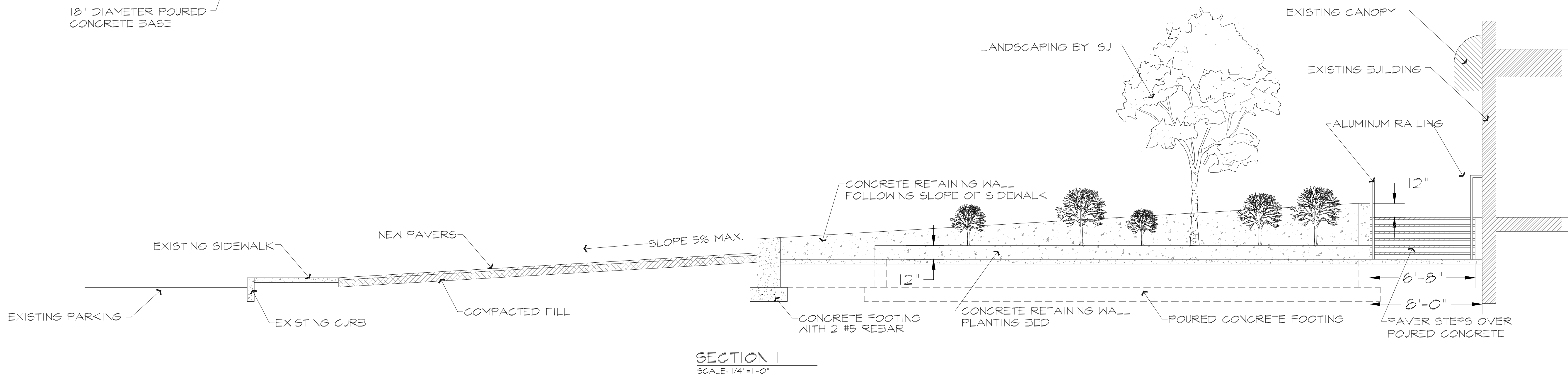
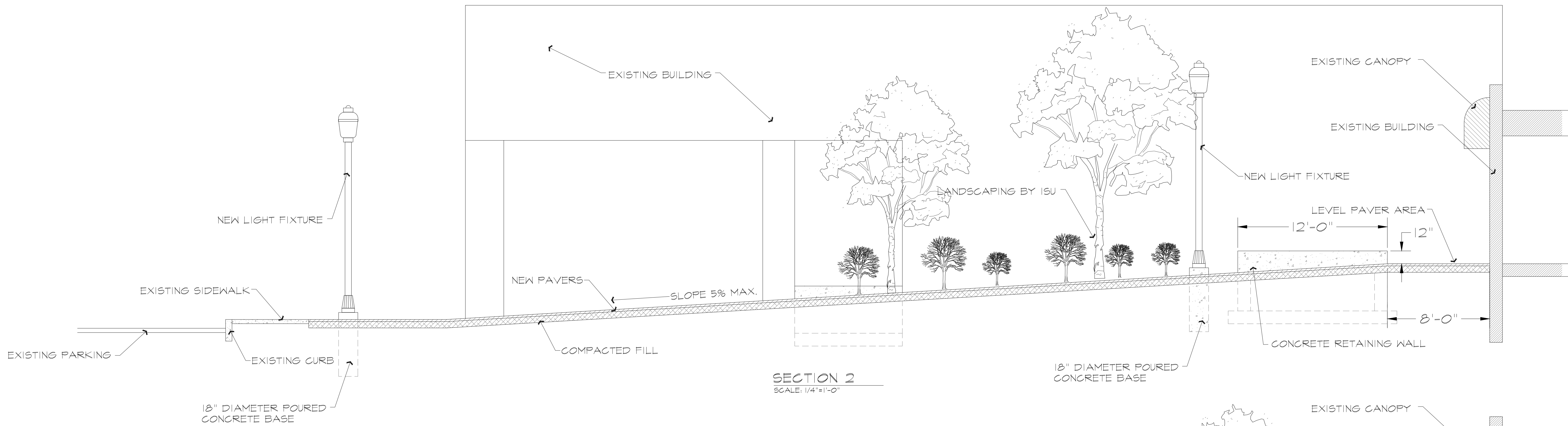
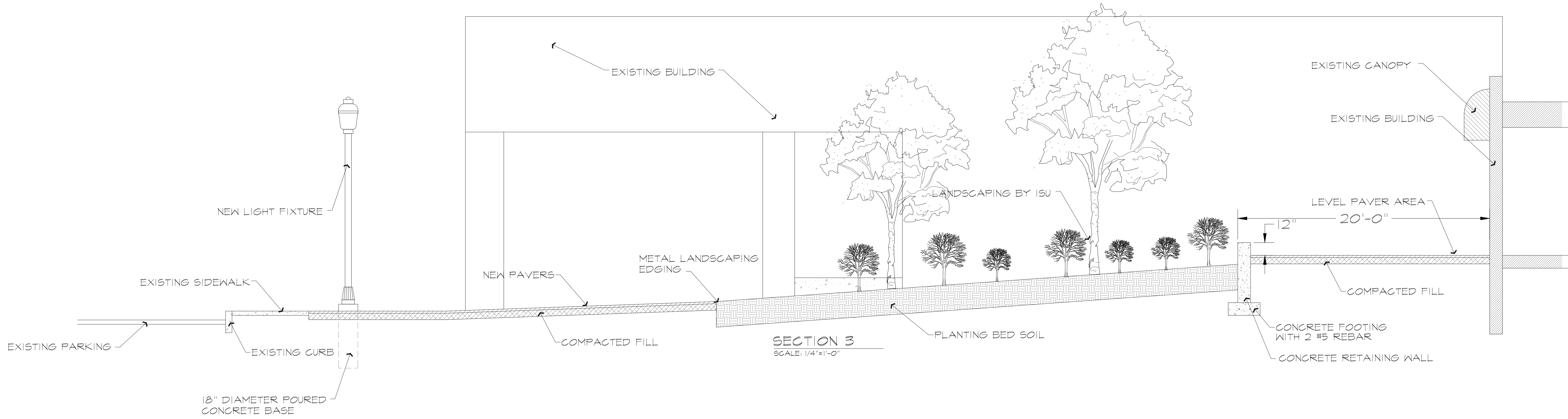
Facilities Management Department
 951 Sycamore Street
 Terre Haute, Indiana 47804
 Phone: (812) 237-8100 Fax: (812) 237-1630

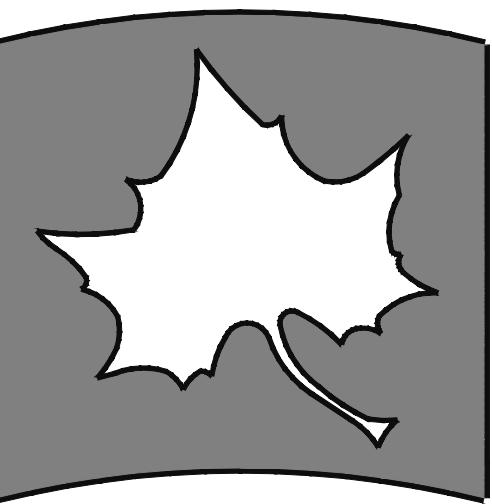
HMSU NORTH ENTRY
 PLAZA RENOVATION

SECTIONS

FILENAME	PROPERTY NO.	REVISIONS
DATE:	3/12/2024	
SCALE:	1/4"=1'-0"	
DRAWN BY:	S. STILLMAN	
CHECKED BY:	B. DUNCAN	
APPROVED BY:		
PROJECT NO.:		

SHEET NO.
 A200
 OF SHEETS





INDIANA STATE UNIVERSITY

Facilities Management Department
 951 Sycamore Street
 Terre Haute, Indiana 47809
 Phone: (812) 237-8100 Fax: (812) 237-1630

HMSU NORTH ENTRY
 PLAZA RENOVATION

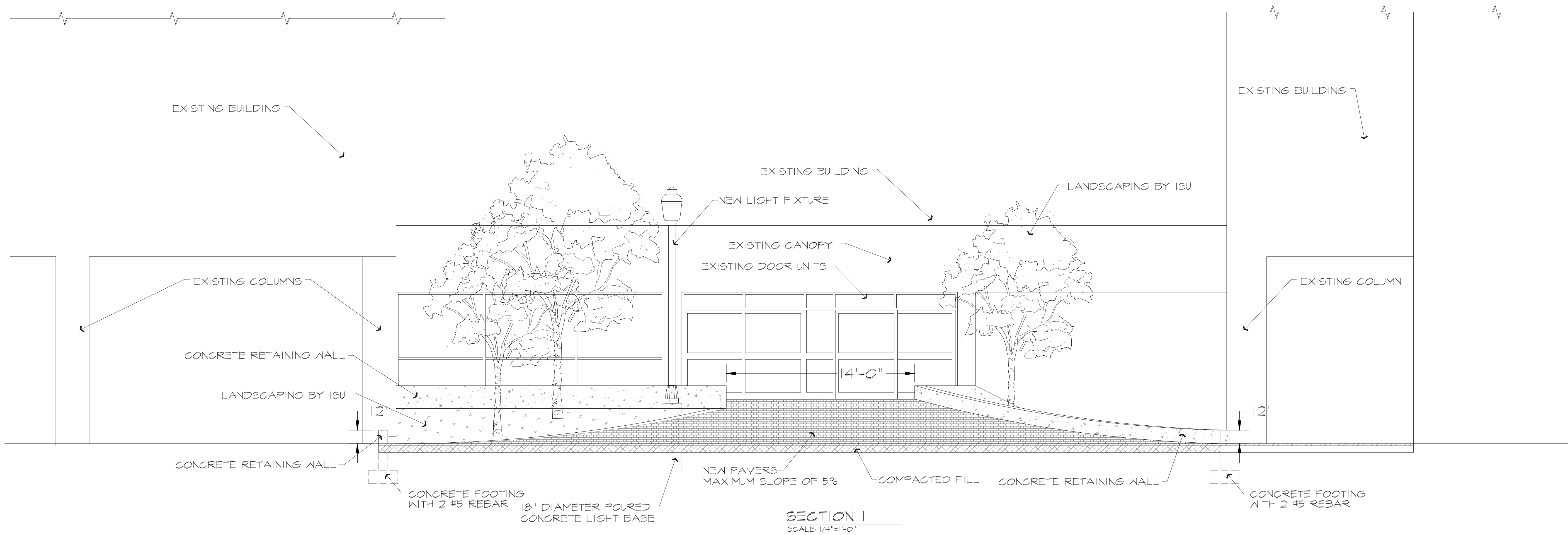
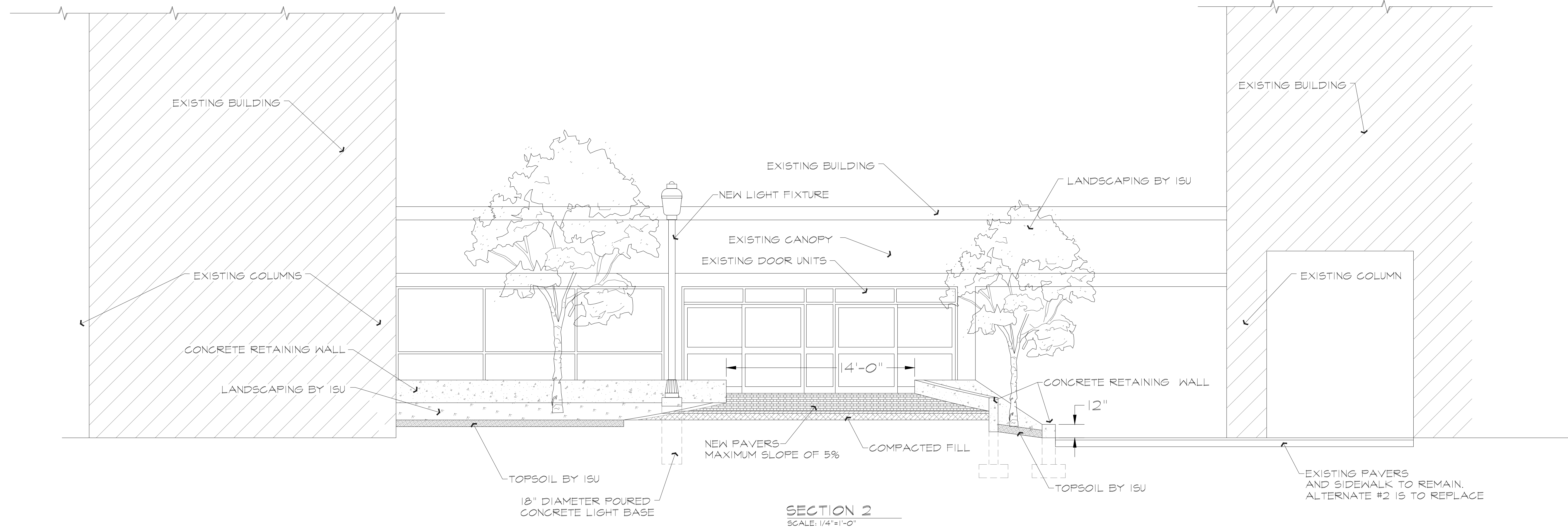
SECTIONS

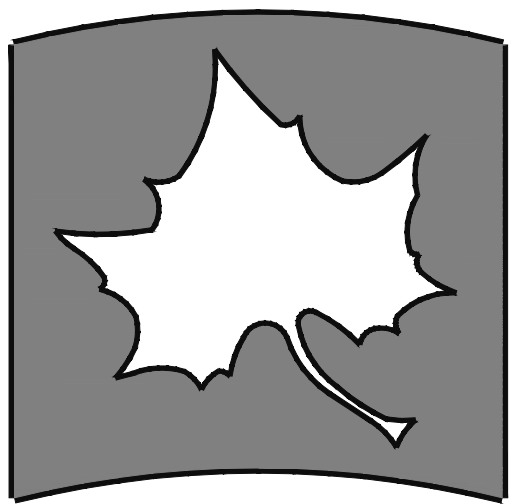
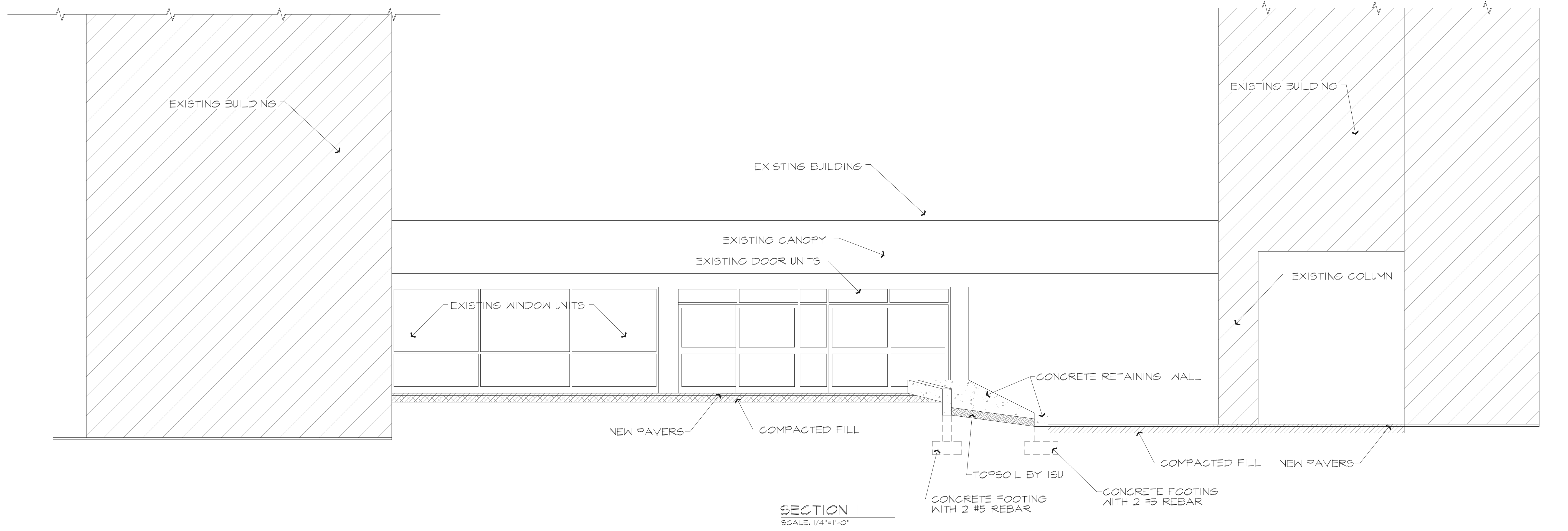
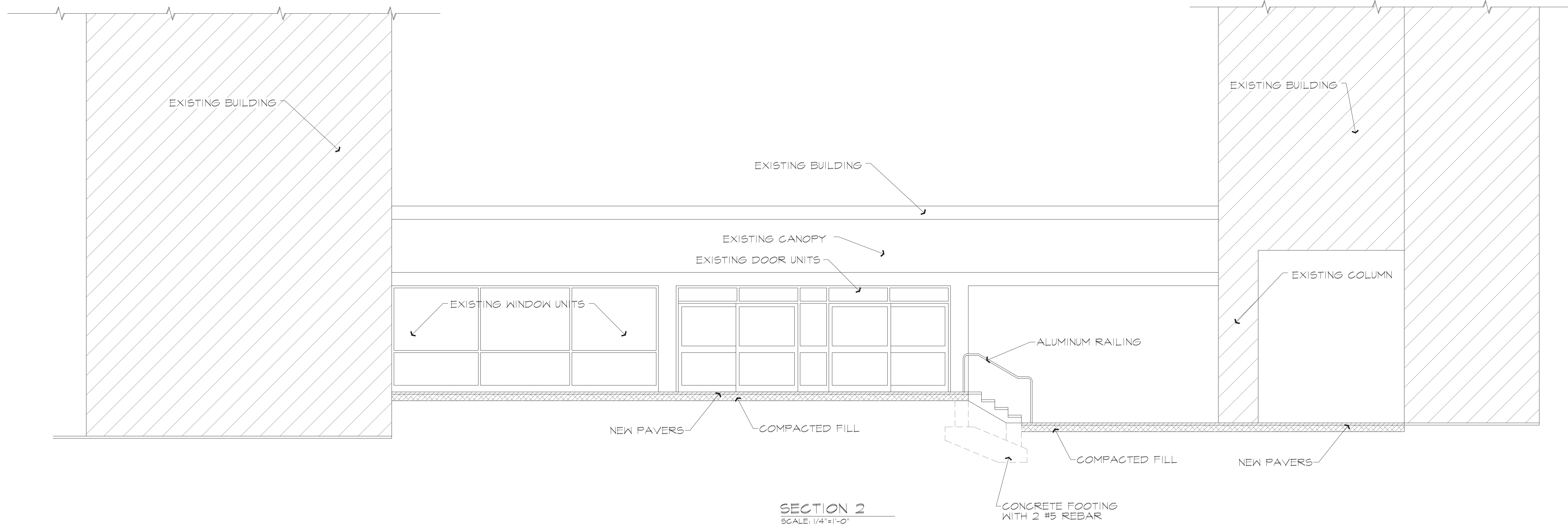
FILENAME	PROPERTY NO.	REVISIONS
1		
2		
DATE:	2/2/2024	
SCALE:	1/4"=1'-0"	
DRAWN BY:	S. STILLMAN	
CHECKED BY:	B. DUNCAN	
APPROVED BY:		
PROJECT NO.:		

SHEET NO.:

A201

OF SHEETS



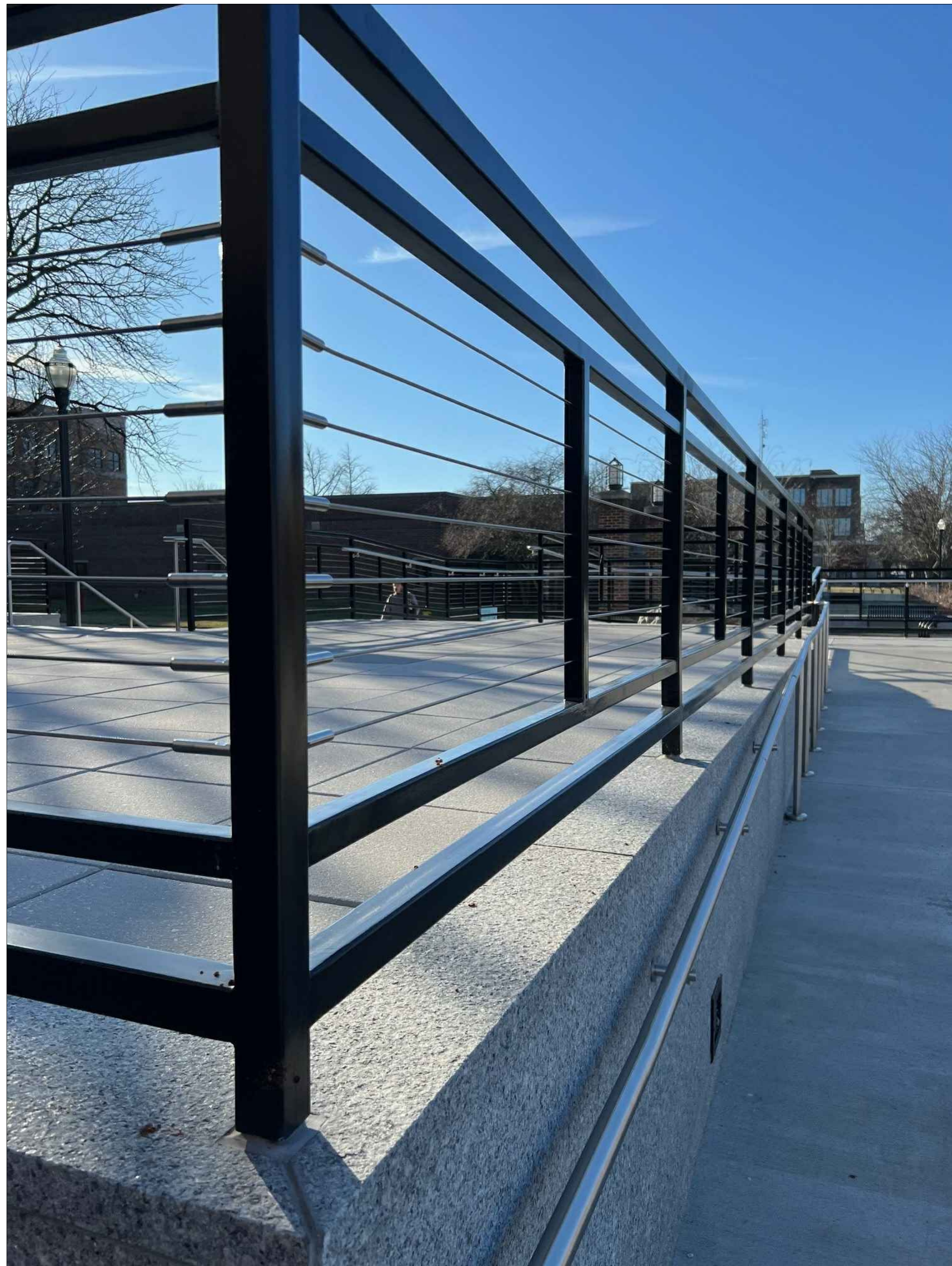


INDIANA STATE UNIVERSITY
 Facilities Management Department
 951 Sycamore Street
 Terre Haute, Indiana 47809
 Phone: (812) 237-8100 Fax: (812) 237-1630

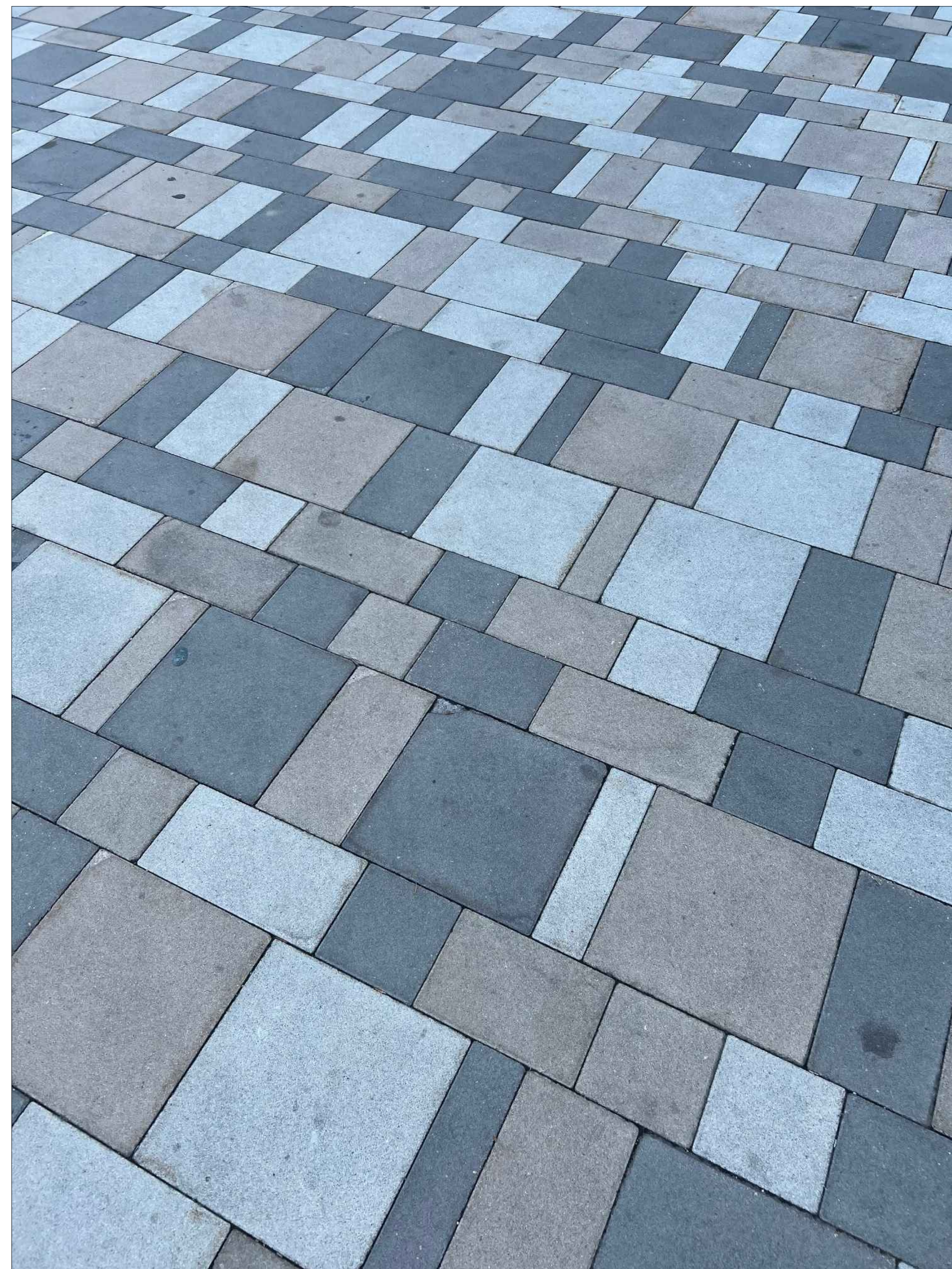
HMSU NORTH ENTRY
 PLAZA RENOVATION
 SECTIONS

FILENAME	PROPERTY NO.	REVISIONS
DATE:	3/12/2024	
SCALE:	1/4"=1'-0"	
DRAWN BY:	S. STILLMAN	
CHECKED BY:	B. DUNCAN	
APPROVED BY:		
PROJECT NO.:		

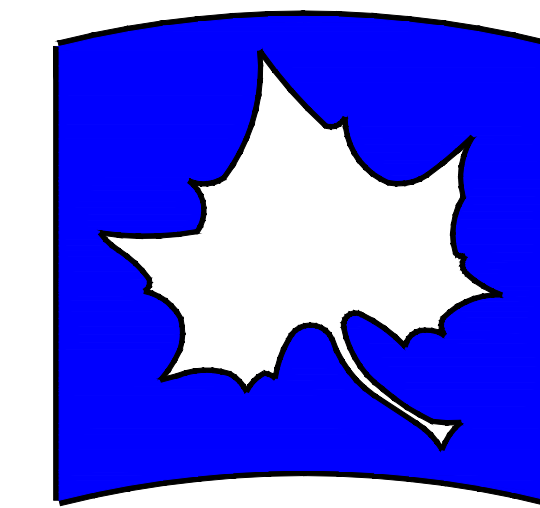
SHEET NO.
 A202
 OF SHEETS



RAILING DETAIL
SCALE: NO SCALE



PAVER DETAIL
SCALE: NO SCALE

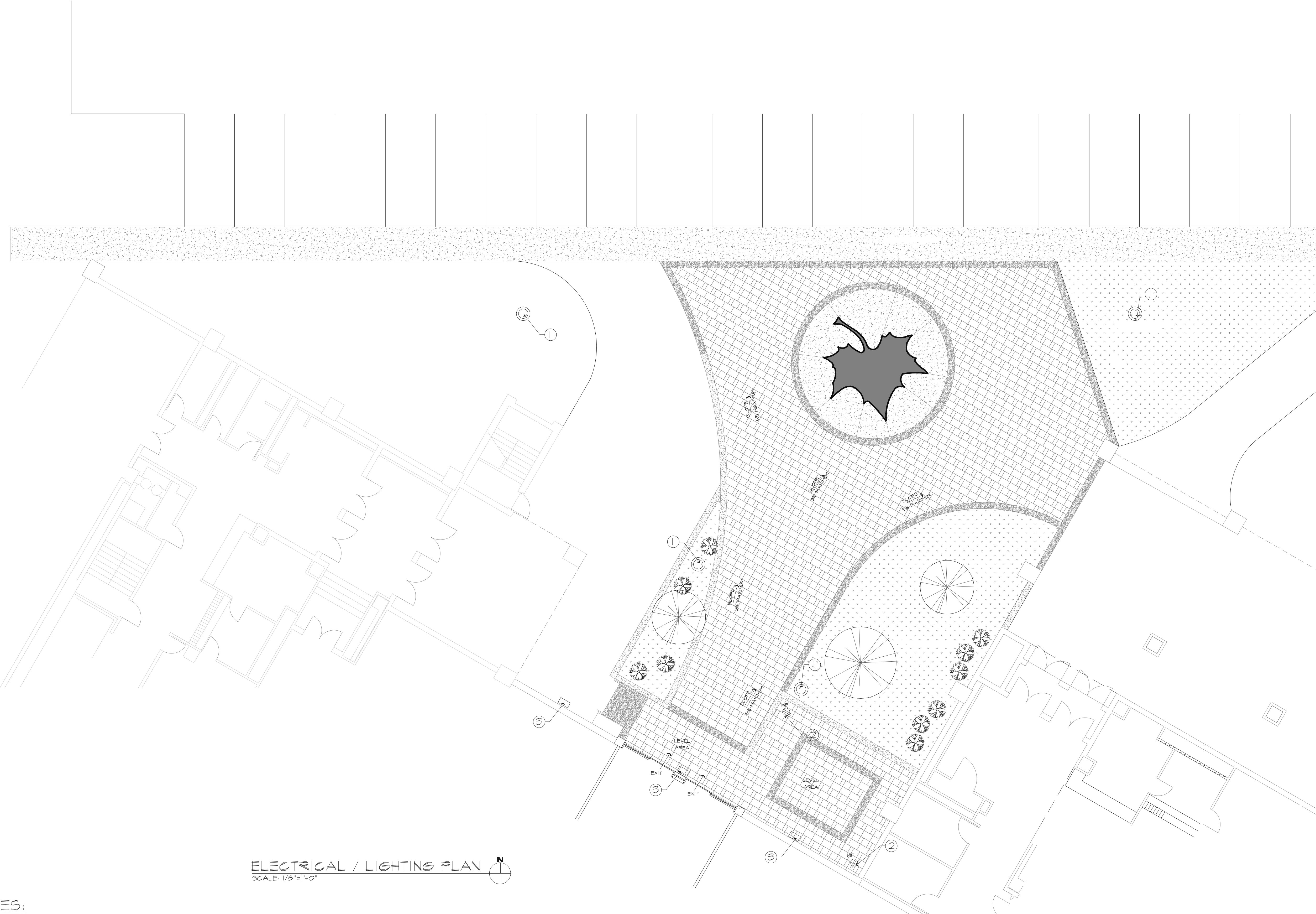


INDIANA STATE UNIVERSITY
Facilities Management Department
951 Sycamore Street
Terre Haute, Indiana 47809
Phone: (812) 237-8100 Fax: (812) 237-7630

HMSU NORTH ENTRY
PLAZA RENOVATION
DETAILS

FILENAME:	
PROPERTY NO.:	
	REVISIONS
1	
2	
DATE:	3/12/2024
SCALE:	1/2" = 1'-0"
DRAWN BY:	S. STILLMAN
CHECKED BY:	B. DUNCAN
APPROVED BY:	
PROJECT NO.:	

SHEET NO.
A301
OF SHEETS

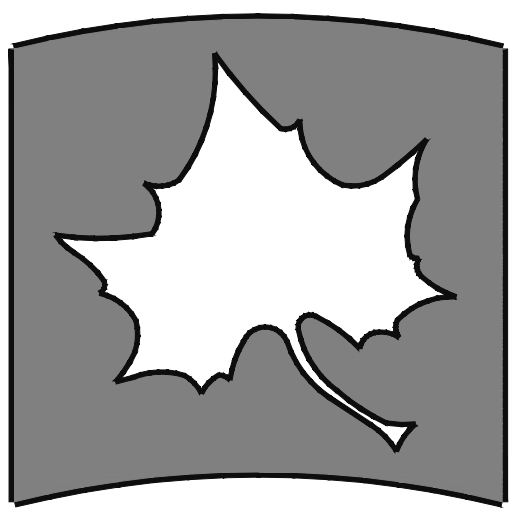


ELECTRICAL / LIGHTING PLAN
SCALE: 1/8"=1'-0"

PLAN NOTES:

- ① INSTALL A POURED CONCRETE 18" ROUND LIGHT POLE BASE AND A 12' TALL LIGHT POLE AS "HOLOPHANE" MODEL # WAES P30 30K MVOLT MS GL5 BK SBR TBK PR1 AO SH PROVIDE NEEDED CONDUIT, WIRE AND ANCHOR BOLT BASE AS REQUIRED.
- ② INSTALL A DUPLEX WEATHER PROOF SURFACE MOUNTED 110V OUTLET BOX. SEE SPECIFICATIONS FOR DETAILS.
- ③ INSTALL AN LED WALL PACK LIGHT FIXTURE THAT IS MOUNTED INSIDE THE EXISTING CANOPY AREA. WALL PACK LIGHT FIXTURE TO BE "BEACON" GEOPAK SERIES I MODEL # GSP1-24-20-3K0-3-UNV-BLT-20F THIS SHALL BE BID AS ALTERNATE #2

BASE BID #3



INDIANA STATE UNIVERSITY
Facilities Management Department
951 Sycamore Street
Terre Haute, Indiana 47804
Phone: (812) 237-8100 Fax: (812) 237-1630

HNSU NORTH ENTRY
PLAZA RENOVATION
ELECTRICAL / LIGHTING PLAN

FILENAME:	
PROPERTY NO.:	
REVISIONS	
1	
2	
DATE:	3/12/2024
SCALE:	1/8"=1'-0"
DRAWN BY:	S. STILLMAN
CHECKED BY:	B. DUNCAN
APPROVED BY:	
PROJECT NO.:	

SHEET NO.
E101
OF SHEETS